



Ministerie van Economische Zaken



www.food-future.eu
Knowledge transfer and
innovation support
Germany-NLs

European Structural and Investment Funds

Yvette Lammers
Ministry EZ
Coordination unit
Structural Funds

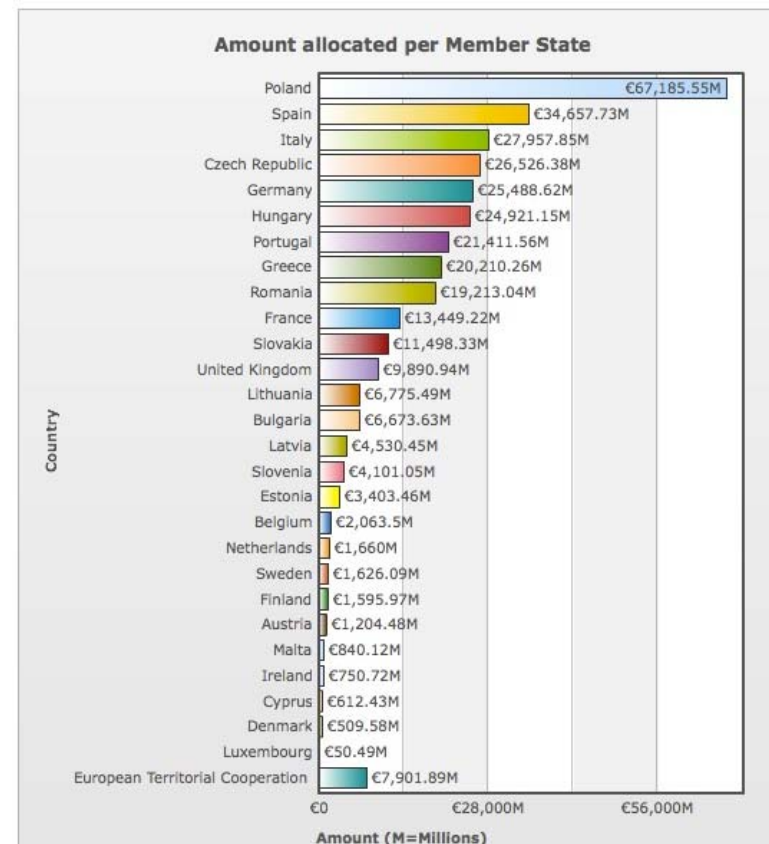
15 februari 2014



ESIF: European Structural and Investment Funds

- ERDF: European Regional Development Fund, including European Territorial Cooperation ('INTERREG')
- EAFRD: European Agricultural Fund for Rural Development
- EMFF: European Maritime and Fisheries Fund
- ESF: European Social Fund

All 4 ESIF funds focus on Europe2020. All 2014-2020.





Thematic objectives ESIF funds

- ESI funds focus on 11 thematic objectives
 - Most relevant for Bio Based Economy
 - (1) research & innovation;
 - (3) competitiveness of SMEs
 - (4) shift towards a low-carbon economy (inc. sustainable energy & e. efficiency)
 - (6) preserving/protecting the environment and promoting resource efficiency;
-
- 50-80% of ERDF on obj. 1-4
 - 12-20% of ERDF on obj. 4
 - Example NLs: 25% obj 4; 75% obj 1.



**ERDF + Cohesion
fund (transport)
spending in 2007-
2013. Total €271
billion**



Smart Specialisation Strategies

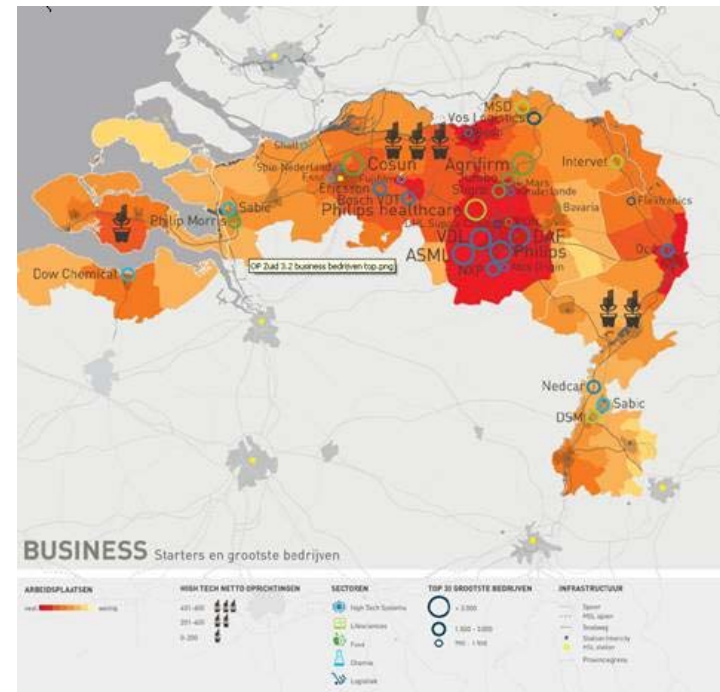
- **research and innovation *strategies for smart specialisation***
- enabling regions to focus on their strengths
- sound analysis of regional assets and technology
- avoid unnecessary duplication
- strong partnership between businesses, public entities and knowledge institutions
- basis for ESI funds investments in R&I

- More information:
- <http://s3platform.jrc.ec.europa.eu/home>
http://ec.europa.eu/regional_policy/indexes/in_your_country_en.cfm



Smart Specialisation Strategies: added value

- Cross over between (top) sectors
- Cross border with Belgium and Germany
- Example in the Netherlands: Brainport 2020.
- - cooperation between multiple stakeholders in the form of open innovation
- - this model as a driver for regional development.
- Main sectors are: HTSM, Chemical engineering, AGRO & Food en logistics as enabler





Synergy between funds: innovation chain

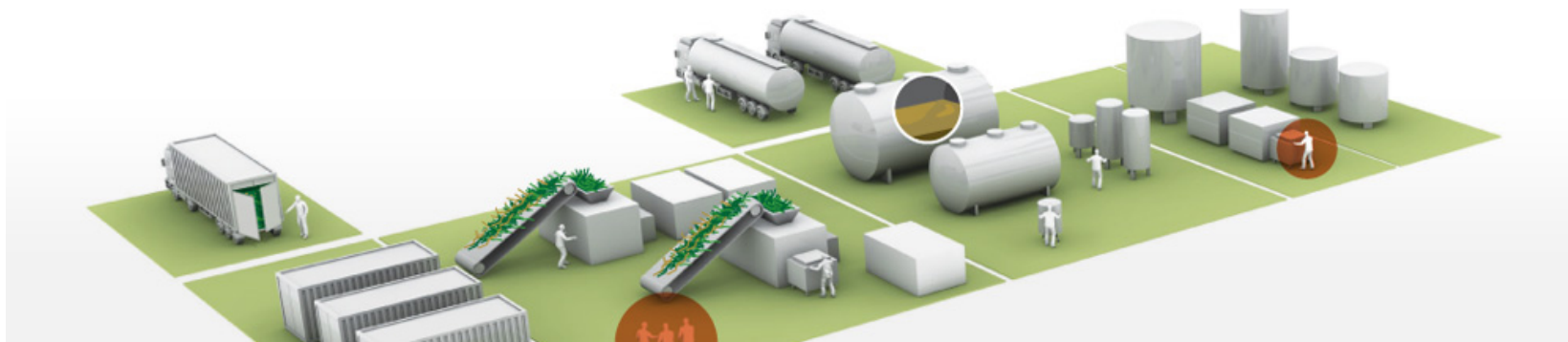
- | | | |
|-----------------------------------|---|---|
| Scientific research: | Innovation in ERDF (& Interreg) | Innovation EAFRD: |
| • H2020 (incl SME i- whole chain) | • R&D infra, centres of competence | • Transfer of knowledge for large scale diffusion |
| • ERA | • business investment in R&D | • Guarantee introduction innovation |
| • National research funds | • links enterprises – research clusters, networking | • Investment in innovation in farms |
| | • technological and applied R | |
| | • pilots, validation | |





Synergy, innovation chain: example

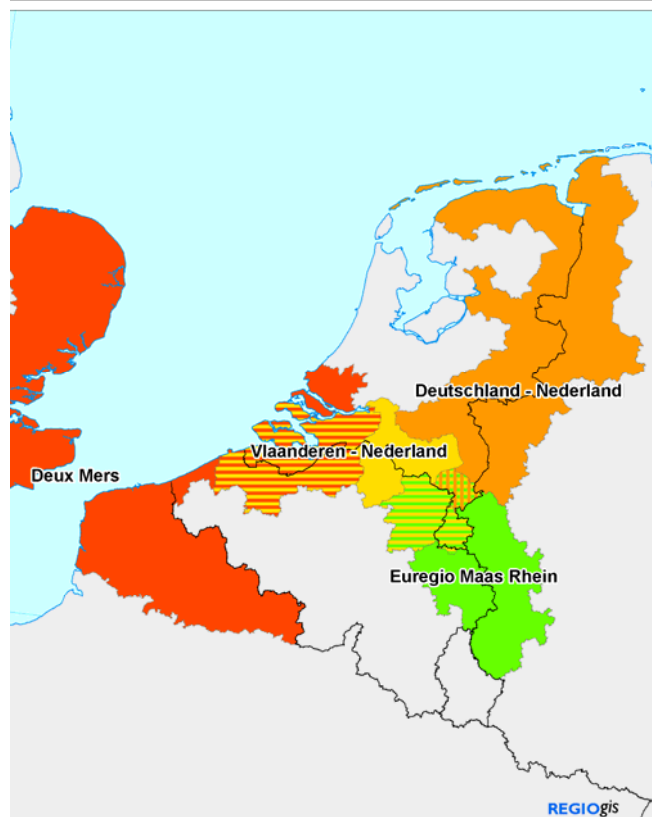
- **Bioprocess Pilot Facility (BE Basic): (re)using green resources**
- scaling novel production processes up from laboratory scale to a larger, industrial scale
- separate modules enable different testing processes and enable flexible use: large scale testing to SME use. Also in use for student training.
- Both its scale and its open nature are unique





INTERREG (European Territorial Cooperation)

es with the participation of Dutch regions

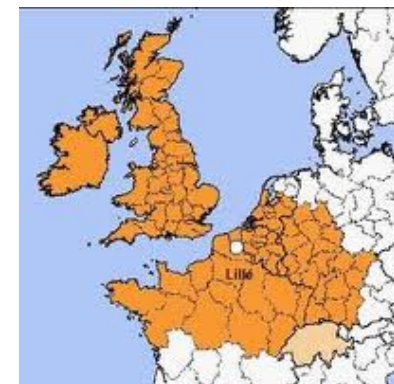


- 8 billion 2013-2020
- A. Cross border (80%)
- B. large areas (19%)
- C. whole EU, exchange of experiences etc.

- Innovation important objective, esp. in A.
- Typical: involve 1 partner from each side of the border. Networks, clusters, knowledge transfers, pilots



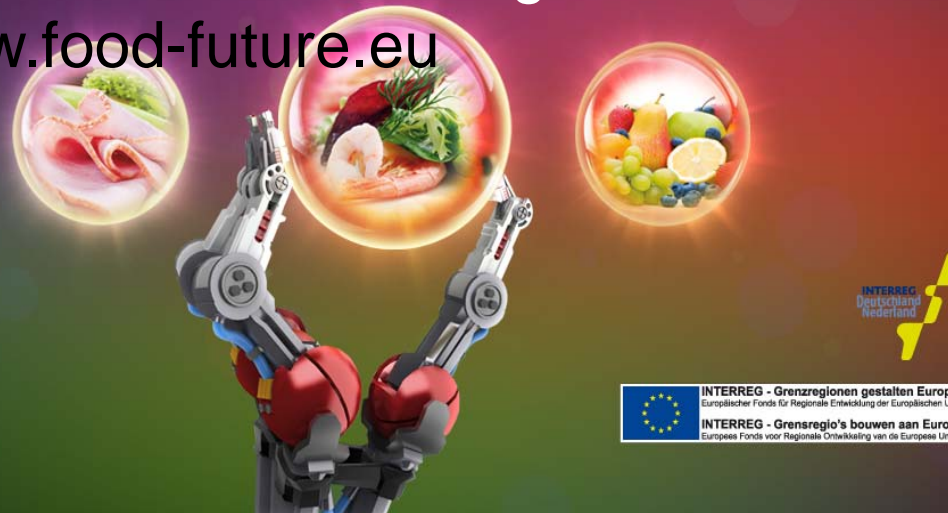
B NW Europa





INTERREG: examples I

For SMEs in both Germany and NLs:
from innovation advise to knowledge
transfer to building research cluster.
Always tailored and specific advise
Cross border knowledge
www.food-future.eu



Agro bio polymers

- 25 companies and institutions
- whole production chain, both agri and industrial
- new networks, new products
- both ERDF and INTERREG (total 5 million €)



INTERREG: examples II

- Dairyman
- measuring use of for 120 farmers in 10 regions
- giving
- feedback developing new measuring techniques
- testing 18 innovations
- reduction of CO2 emissions 20-50%
- Interreg B North West Europe





Conclusions

- Structural funds useful! Particular for:
- innovation, network, living labs, pilot facilities, etc.
- follow up on research projects, valley of death
- cross-overs, cross-border cooperation

Practical advise:

- contact relevant managing authority now and regularly ([ec.europa.eu/regional policy](http://ec.europa.eu/regional_policy))
- match regional and national instruments/tools (for example for innovative SMEs)
- send promising projects to each other (all funds)



Questions? + more information

- Yvette Lammers y.lammers@minez.nl +31611376866

ERDF:

- http://ec.europa.eu/regional_policy/index_en.cfm
- http://ec.europa.eu/regional_policy/indexes/in_your_country_en.cfm

Smart specialisation:

- <http://s3platform.jrc.ec.europa.eu/home>

NLs:

- <http://www.europaomdehoek.nl/>
- <http://www.rijksoverheid.nl/onderwerpen/europese-subsidies>